

# TRANSIT WASH SYSTEMS

HEAVY-DUTY CLEANING FOR BUSES, TRAINS, AND OTHER TRANSIT VEHICLES







## REVOLUTIONIZE THE WAY YOU WASH YOUR TRANSIT VEHICLES

Whether your application is for a bus or a train, InterClean has a wash solution for you. Each InterClean system is custom engineered to operate in conditions specific to your wash site. When completed, you can expect a highly reliable wash system that performs exactly as expected, requiring a minimum level of maintenance.

InterClean offers easily accessible preventative and routine maintenance services for the life of your system, ensuring it continues to deliver the results you're looking for - every time, across every vehicle.

### TOUCHLESS WASH

The CentriSpinner® system uses targeted zero-degree rotating spray nozzles to offer the best touchless cleaning power available.



### HYBRID WASH

Powerful touchless cleaning is used on the vehicle's front, top, and rear surfaces, with specialized foam brushes reserved for the sides.





## GANTRY WASH

A highly customizable and effective wash solution offering touchless and friction cleaning options, or a combination of both. Vehicles can receive a complete clean in under 5 minutes. Just pull up and let the Ultra Gantry system do the rest.



## XJ FRICTION WASH

Innovative drive-through friction wash systems use wrapping brushes to clean the front, sides, and back of the vehicle. Optional high-pressure sprays can be added for additional cleaning of the front surfaces and windshield.



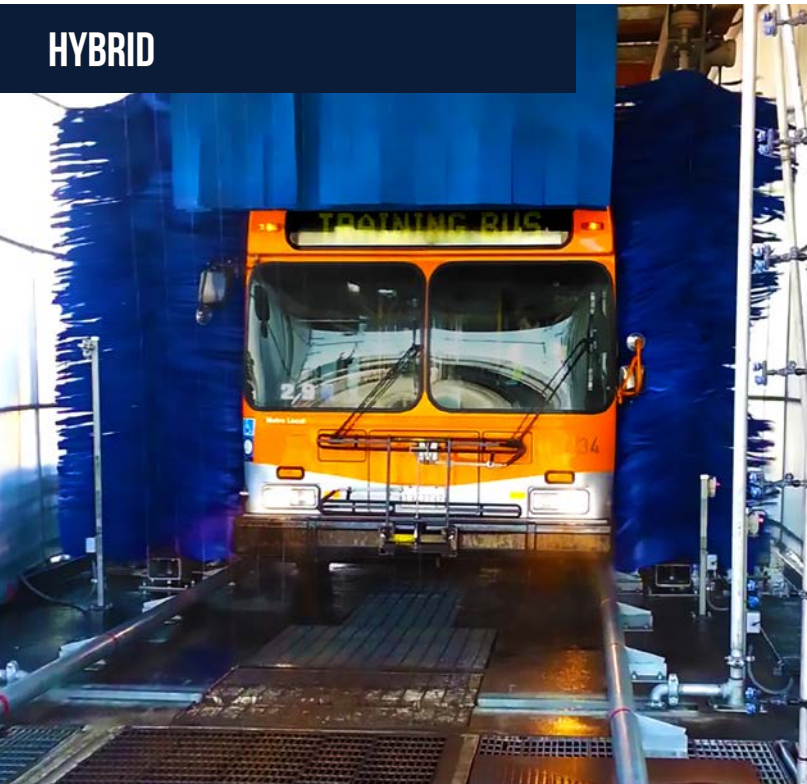


# FRICION WASH SYSTEMS



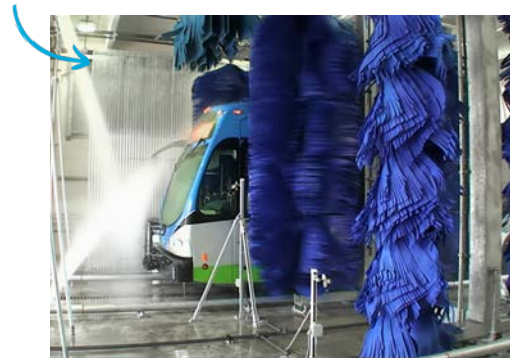
- InterClean offers several friction cleaning options for your transit fleet.
- » Hybrid wash systems that combine touchless spray and foam brushes for a friction clean with a softer touch.
  - » Drive-through XI series offer the latest in friction wash technology.

## HYBRID



The Hybrid Wash System is a drive through wash system designed to use a combination of touchless cleaning for the front, top, wheel, under chassis and rear of a transit vehicle and foam brushes for the sides.

- » The brushes are designed with a foam material in a fixed position and do not interfere with bus traffic preventing accidental damage to the bus and the wash equipment.



- » As the vehicle moves through the wash, sensors detect its position and activate the high-pressure touchless cleaning component, while also activating and deactivating the brushes.



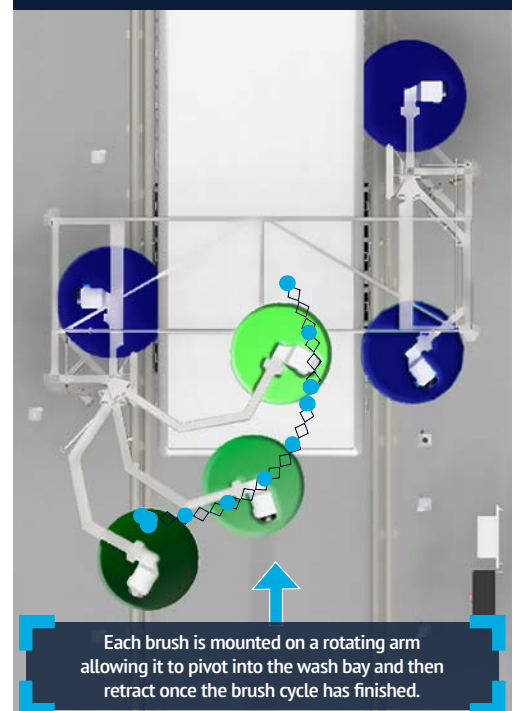
# XJ FRICTION WRAP BRUSHES



The InterClean XI modules are effective friction type drive-through wash systems, perfect for demanding wash cycles. These systems achieve a thorough and complete clean by using both high-pressure water and innovative friction cleaning technologies.

- » A modern brush design is used across all of InterClean's XI friction wash systems resulting in a stronger wash capability and reduced amount of detergent needed per wash.
- » All standard XI brush models are supported top and bottom ensuring **even pressure is applied along the entire brush**.
- » The **rear brushes follow the back of the vehicle** instead of "swiping" at the surfaces, cleaning the rear of the vehicle in an overlapping pattern as it proceeds through the wash.
- » Soft yet durable brushes clean the entire vehicle's surface area without damaging any surfaces or finishes on the vehicle, even after an extended number of uses.
- » Available in a 2 brush or 4 brush configuration.

## REAR BRUSH CLEANING ACTION



## XJ 1000 BRUSH MODULE



The XJ 1000 brush modules are single-brush units which can be added to any wash system for additional cleaning action.





# GANTRY WASH SYSTEMS

The Ultra Gantry is a heavy-duty, automatic rollover wash system based on a modular configuration featuring a diverse mix of selectable and built-in programming elements, controls and functional features. These systems are a highly customizable and effective wash solution with combinations of both touchless and friction options for vehicles or trains.

- » Choice of [touchless, friction, or combination cleaning process](#).
- » Full line of safety features including emergency stops and rail safety plates.
- » Smaller footprint options for locations limited by available space or layout challenges.



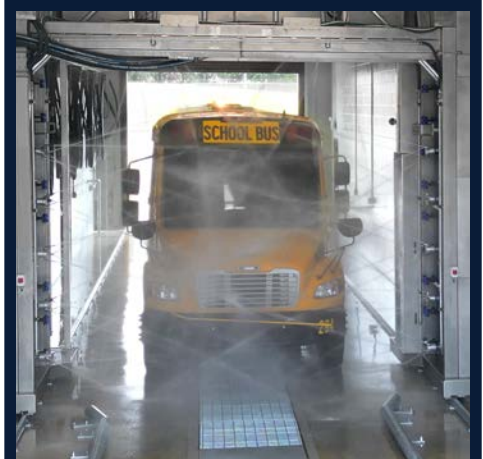
## TWO BRUSH TRANSIT

A combination of touchless and friction cleaning techniques ensure a thorough cleaning of all surfaces. Two side brushes apply friction cleaning to the sides, front, and rear surfaces, while dual nozzle, adjustable detergent spray bars are strategically mounted on each side of the gantry.



## THREE BRUSH HYBRID FLEET

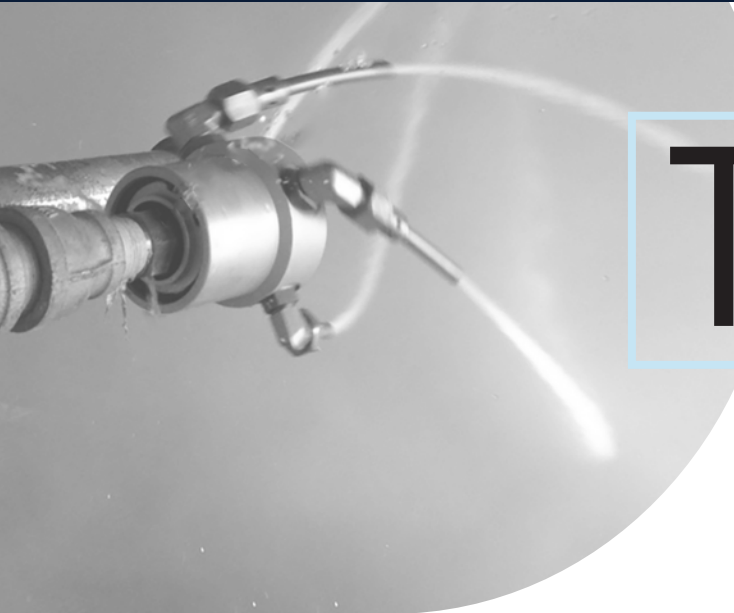
Features two side brushes and one top brush. Our Total Brush Control (TBC) technology ensures the brushes apply even pressure from top to bottom and protects sensitive areas like mirrors and exterior attachments. Tall machine height allows for clearance for taller vehicles.



## TOUCHLESS SPINNER MIXED FLEET

High-pressure Centri® Spinners or V-spray nozzles are configured to provide a highly effective, completely touchless wash. Particularly useful for vehicles with unique shapes or hard-to-reach areas difficult to clean with a brush.

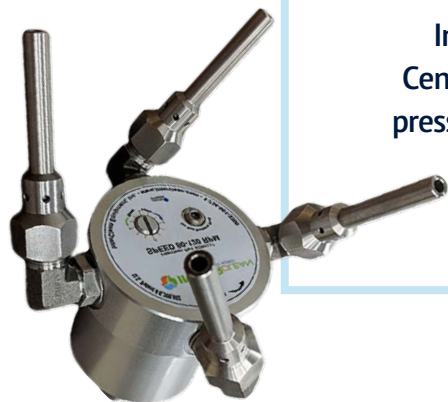
# TOUCHLESS AUTOMATIC WASH



**THE KEY CLEANING ADVANTAGE** | High-pressure water jets, essential for effectively cleaning vehicles with areas beyond the reach of brushes, remove mud, caked-on dirt, sand and other coarse particles.

The heavy duty cleaning power of the CentriSpinner® nozzles remove dirt, grime, salt, and other corrosives quickly and efficiently through a completely touchless wash process.

- » Touchless cleaning using zero-degree impact nozzles with rotation allows for **maximum cleaning power and coverage with minimum water** usage.
- » Fully adjustable (stainless steel) Spinner nozzles clean front and sides of vehicle.
- » Each Spinner delivers 15gpm of water @ 300 PSI.
- » Standard 3-year factory warranty for all new Spinners.



InterClean's specialized CentriSpinners® are high-pressure nozzles mounted to heavy-duty spray arches constructed of galvanized steel.





# TRAIN WASH SYSTEMS

Whether your trains are powered by catenary, third rail, or locomotive, InterClean has a wash solution for you. We have worked hard over the years, on countless systems around the world, to become a trusted name in train and transit wash systems.

Since its founding, InterClean has focused on designing and building effective, high quality, durable, and efficient heavy-duty train wash systems. Sustainability and safety features of these designs include high efficiency motors, advanced control features to activate/deactivate wash components, water management, and more.



Each InterClean wash system is custom engineered - designed to operate in the climate and conditions specific to your wash site. When completed, [you can expect a highly reliable wash system that performs exactly as expected](#), and requires a minimum level of maintenance.

» **Drive-Through Touchless**

Uses CentriSpinner® zero-degree rotating nozzles, designed to provide a thorough cleaning in even the hardest to reach places of your rail cars.

» **Automatic Friction Wash**

Slanted, vertical, eaves, and counter-rotating side brushes provide complete cleaning front to back, and top to bottom of the train cars.

» **Rollover/ Gantry Style**

A highly customizable and effective wash solution featuring combinations of both touchless and friction options to wash the top, rear, front, and sides of train cars.







## CONFIGURATIONS & OPTIONS

- » Cooling Arch
- » Two-Step Chemical Application
  - Acid and Alkaline
- » High Pressure Touchless Wash
  - Front and Rear of Train
- » Combination of Brushes
  - XJ 1000 Single Brush Modules
  - Slanted Brushes
  - Eaves Brushes
- » Rinse Options
  - Fresh Water Rinse
  - Reverse Osmosis / Spot Free Rinse
- » Roof Cleaning
  - Touchless or Brushes
- » Blower Arches
- » Radar Speed Display(s)



## SUSTAINABLE WATER MANAGEMENT

- » Water Recycling
- » Effluent Monitoring
- » pH Neutralization
- » Rainwater Harvesting & Storage
- » Secondary Filtration
- » Bioremediation and Ozone/UV for Enhanced Water Treatment

# CHASSIS WASH SYSTEMS



Vehicles and heavy-duty equipment that drive on rough or unfinished surfaces collect debris on the undercarriage causing corrosion on the chassis and mechanical components, leaving them at risk for rust and structural damage.

Regularly using an InterClean Chassis Wash system will help prevent this by cleaning away the corrosive material, road buildup, and other debris from the underside of the vehicle.

- » Balanced integration of intense cleaning power, reliable water recycling, and convenient, economical dirt removal.
- » Dramatically reduce time needed to prepare vehicles for maintenance and repair.
- » Multiple configurations available.

InterClean Chassis Wash System modules can be used as a stand-alone chassis wash system, combined with new InterClean wash system installations, or placed in an existing wash bay.

## 2 AND 4 SPINNER



## SPRAY BAR





# EQ 100 WATER RECLAIM SYSTEM

Recycling wash water greatly decreases the amount of fresh water needed, and disposed of by up to 90% each wash. Water reclamation saves money and enables facilities to operate efficiently in areas with high water and sewer costs, or areas that are highly regulated.

By using the efficient and cost-effective EQ 100 water recycling system, InterClean Equipment is able to employ the full force of huge volumes of pressurized wash water, which creates a cleaning impact that is simply not possible with other automatic vehicle washing systems.

The system is designed to recycle and aerate the wash water automatically, without requiring changing filters or manual supervision. Its durable construction makes it capable of operating under the most demanding vehicle wash conditions, capable of recycling high volumes of water for washing train cars and large bus fleets.



The modular design requires only 25 ft<sup>2</sup> of space allowing for easy installation using a reclaim pit and almost any site configuration



## FEATURES

System Design	<ul style="list-style-type: none"><li>The InterClean reclaim system is comprised of a Settling Pit, InterScreen® maintenance free filter, and the EQ Module.</li><li>The modular footprint ensures that the equipment can be precisely configured at the factory to require a small footprint on-site.</li><li>The module is pre-wired, pre-plumbed and mounted on a skid.</li></ul>	
Settling Pit	<ul style="list-style-type: none"><li>Designed to promote separation of solids from the water.</li><li>Continuously aerated by the recirculation pump to prevent unwanted odors.</li></ul>	
Filtration	<ul style="list-style-type: none"><li>Maintenance free stainless steel InterScreen® filter is mounted in the settling pit supplying initial filtration.</li><li>Cyclonic filtering mechanisms incorporated with module to further filter the water before delivering it to the high-pressure pump.</li></ul>	
Treatment	<ul style="list-style-type: none"><li>Module comes equipped with bioremediation system to allow for enhanced water treatment capability.</li><li>The system uses no chemicals or additives and is environmentally sustainable.</li></ul>	
Dimensions	<ul style="list-style-type: none"><li>60" (150 cm) wide x 60" (150 cm) long x 102" (260 cm) tall per unit</li></ul>	
Recycling Capacity		High-Pressure Capacity for Reclaimed Water
<ul style="list-style-type: none"><li>300 GPM (1250 l/m) continuously per unit</li></ul>		<ul style="list-style-type: none"><li>50-300 GPM (200-1250 l/m) continuously per unit</li></ul>

Established in 1984, InterClean Equipment is a leader in the design, build, and installation of automated heavy-duty vehicle wash equipment. We are an engineering, innovation, and technology pioneer that builds, installs, and services wash systems for vehicles ranging from standard buses and trucks, up to 440-ton mining haul trucks. We have the knowledge and experience to handle the toughest applications in the most demanding environments.



INTERCLEAN EQUIPMENT IS A WHOLLY OWNED  
SUBSIDIARY OF OAKLAND INDUSTRIES, INC.

INTERCLEAN EQUIPMENT, LLC  
709 JAMES L. HART PARKWAY  
YPSILANTI, MI 48197 USA

PHONE: +1 (734) 961 3300  
FAX: +1 (734) 961 0092  
U.S. AND CANADA:  
+1 (800) 468-3725

EMAIL: SALES@INTERCLEAN.COM  
TECHSUPP@INTERCLEAN.COM  
WEBSITE: INTERCLEAN.COM